

# Packaging Design/Pallet Loading Software

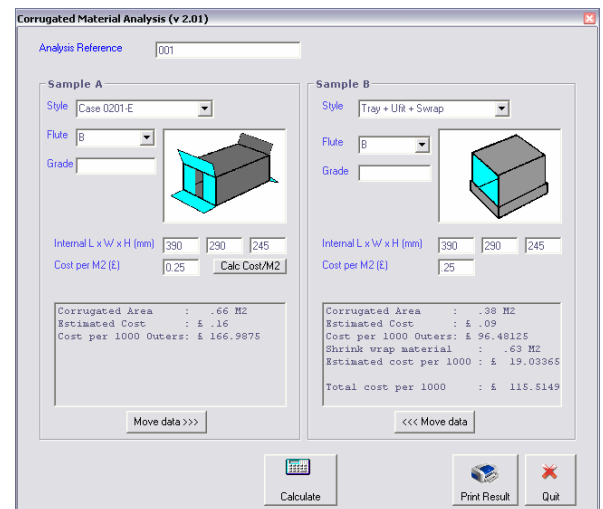
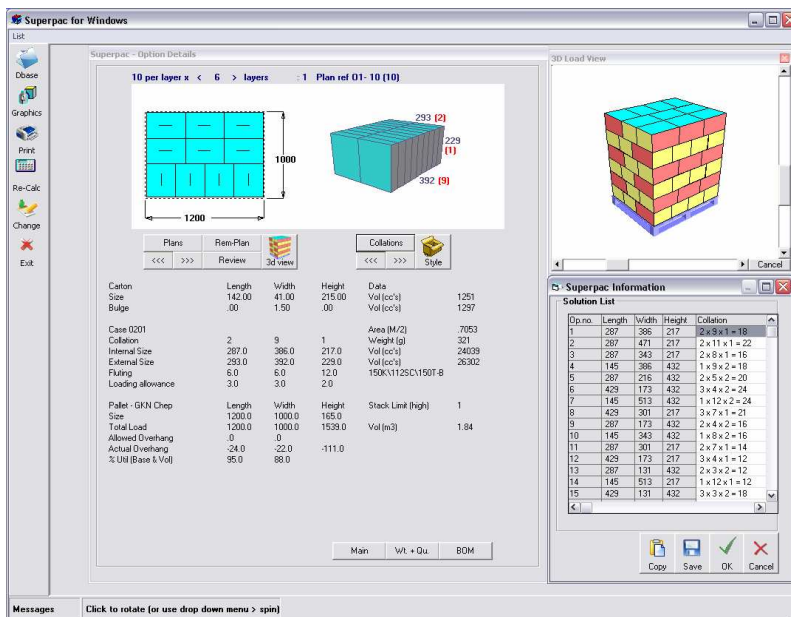


fast development – fewer pallet movements - less cost

Superpac is an easy to use, state of the art, software package which has been developed by us since 1981 and works with Windows NT/2000/XP/Vista. It's the fastest way to establish your optimum packaging solution for any new or existing product.

The latest version (2008 v10) has been greatly enhanced and includes features that make best use of the latest generation of PC's whilst still being able to run effectively on older PC's.

The software has been designed to make it friendly to the new user whilst still maintaining all previous features which more experienced users will need. All data files used by older versions can be read with this version.



**Superpac Software can be used most effectively in the following areas:**

**Development** of new primary pack, quantity per case, case size/style and pallet fit.

**Palletisation** of current cases sizes.

**Re-sizing** of primary packs or outer sizes to achieve optimum size, collation and palletisation.

**Re-collation** of primary packs in a case to optimise case size and palletisation.

**Standardisation** and usage of Stock Size Cases or crates.

**Providing** graphic mock ups of proposed packs to marketing or other clients.

**Producing** documentation for sharing information within the supplier - manufacturer - retailer chain.

**Superpac includes:**

**Casefit** - fast & easy case onto Pallet evaluations.

**Evaluations** of primary and/or displays into cases, flat corrugated blanks, flat cartons, crates, drums etc. with screens to present relevant data entry fields for each option.

**Database** storage of solutions for company documentation with personalised set up. Standard copy, PDF or web page output. Multi user / Networking option available.

**Standard and Realistic Graphics** - paints images onto packs and outers.

**Supplier Database** – information on a wide range of Packaging Suppliers incl. email and links to their web sites.

**Corrugated analyser** - establish how you can reduce your corrugated spend by comparing sizes, styles and costs.

**Compression analysis** – establish the compression strength of corrugated materials and suitability for use.

**PCS Packaging Software Ltd.**  
PO Box 183 , Peterborough, PE3 6HX  
Tel: 01733 346878

e-mail: info@pcssoftware.com website: http://www.pcssoftware.com