

Superpac – Crate fill

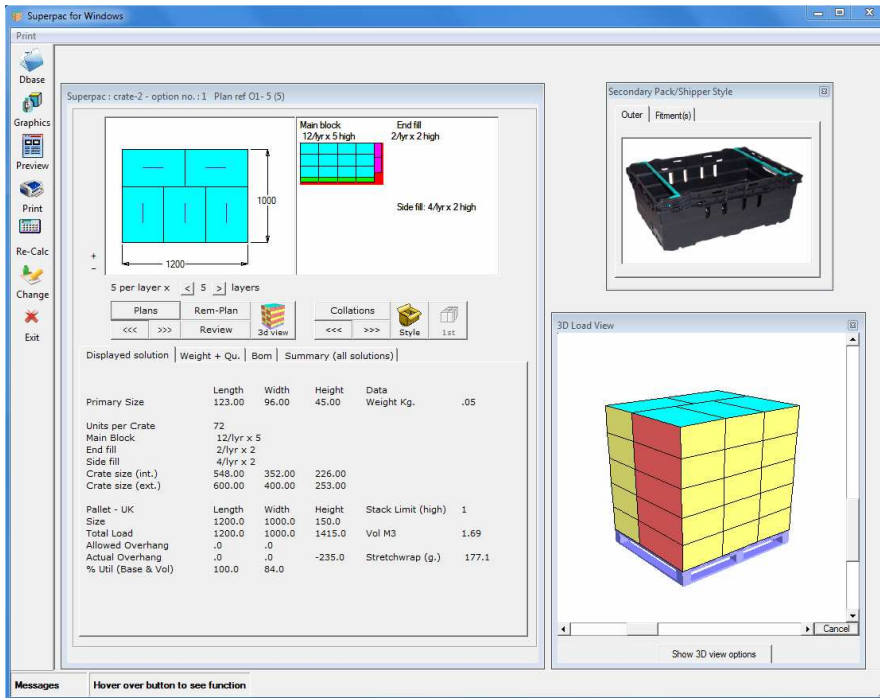


crate packing optimisation - less shipping cost – faster design

The Superpac crate filling software module enables packers to optimise the filling of plastic crates as used in a closed loop system.

Thereby reducing the packing and handling costs in plant and at customer premises.

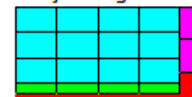
Being part of the Superpac system means that Palletisation is optimised and documentation is produced for Packing Instructions.



The software works by entering a pack size and selecting a crate size from the list of available crates.

The pack is then filled into the main area and rotated to fill any space in the side, end or top of the crate.

Main block 12/lyr x 5 high
End fill 2/lyr x 2 high



Side fill: 4/lyr x 2 high

Any of the pack dimensions can be used as the base and the pack is not rotated if the product does not permit it.

If the optimum crate size is needed (for a given pack) the other crates in the list can easily be evaluated.

The easy to read screen outlines the packing method.

Data can be printed, saved as PDF file's, emailed or copied to the PC's clipboard to be pasted into other applications.

Crate sizes are entered into and read from a file. The file can be edited by the user to add additional crate sizes from your own supplier.

Don't wish to purchase?

As an alternative to purchasing we can carry out batch evaluation's of all of your pack sizes and provide documentation (as PDF's) for each products crates fit. This will provide a full optimisation for a product range in a range of crate sizes.

Displayed solution Weight + Qu. Bom Summary (all solutions)				
Primary Size	Length	Width	Height	Data Weight Kg.
Units per Crate	72			
Main Block	12/lyr x 5			
End fill	2/lyr x 2			
Side fill	4/lyr x 2			
Crate size (int.)	548.00	352.00	226.00	
Crate size (ext.)	600.00	400.00	253.00	

PCS Packaging Software Ltd.
PO Box 183 , Peterborough, PE3 6HX
Tel: 01733 346878

e-mail: info@pcsoftware.com website: <http://www.pcsoftware.com>